



**Create Common Criteria
compliant documentation
Simple and Easy**



PRODUCT BRIEFING



jtsec
BEYOND IT SECURITY

ccgen@jtsec.es



WELCOME

Providing Common Criteria compliant documentation for product evaluation is one of the more time consuming activities that manufacturers looking for a CC certificate have to face. This is especially true for companies without previous experience in certification who are not used to the volume of content required by the norm, making them feel totally lost, not knowing where or how to start. One of the most problematic issues that manufacturers (and labs too!) find during the documentation phase is the constant reappearance of inconsistencies. For example, when we change the name of an SFR iteration, the name of an objective or the code of a test. We can find ourselves losing precious time avoiding inconsistencies instead of employing it in the creation of quality documentation that facilitates understanding of the product details enabling it to pass the evaluation without any problems. CCGen is a new cloud ready freemium tool to aid in the generation of CC compliant product documentation. With a wizard like approach, CCGen will guide you step by step, taking care of every possible inconsistency in the documentation process, accompanied by expert commentary, tips and hints regarding how to easily meet the CC norm. Learn about the advantages that CCGen will bring to your work!

WEB BASED

CCGen is a web based tool using the most advanced state-of-the-art web technologies like HTML5, CSS3 and AngularJS. This means that you don't need to install anything on your computer and that you can access from anywhere.



COLLABORATIVE TOOL WITH COMMENTS

CCGen has been designed for team working. Its web based interface allows you to easily share your progress with your team. Save the project in your own cloud and manage user permissions. Make comments or annotations on the work in progress so everyone can participate in decision-making.



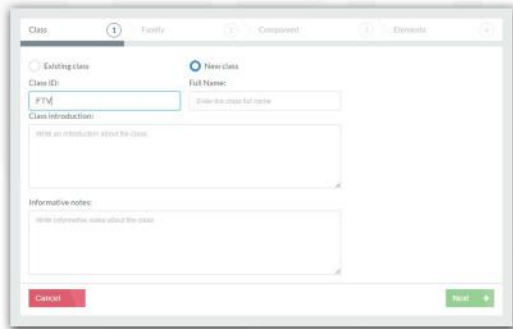


MAPPING AUTO GENERATION

Common Criteria often requires you to create mappings to demonstrate completeness. CCGen can automatically generate those mappings from your input, No more time lost filling out enormous tables!

7.3.1 Necessity and sufficiency analysis

SPR: TOE Security Objective	SPR: SRP	SPR: SRP: Applicable	SPR: SRP: Not Applicable	SPR: SRP: Not Applicable	SPR: SRP: Not Applicable	SPR: SRP: Not Applicable	SPR: SRP: Not Applicable	SPR: SRP: Not Applicable	SPR: SRP: Not Applicable	SPR: SRP: Not Applicable	SPR: SRP: Not Applicable	SPR: SRP: Not Applicable
FDP_IRF.1												
FPA_AFL.1	X											
FPA_AFD.1	X											
FPA_BDS.1	X											
FPA_IAS.1	X	X	X									
FDP_IRF.1										X	X	
FDP_IRD.1										X	X	
FDP_ITC.1										X	X	
FCS_CCF.1										X	X	
FCS_CCF.1										X	X	
FCS_CCF.1										X	X	
FDP_IRP.1										X	X	



EXTENDED SFR WIZARD

Our aim has been to create a product with the highest possible functionality fulfilling every aspect of the Common Criteria norm.

You can even describe new requirements with the Extended SFR wizard. The extended SFR wizard will guide you in the creation of a new SFR if you feel that none in the CC Part 2 describes your product adequately. You can integrate your SFR into an existing class or family, or create new ones from scratch while fulfilling the CC requirements.



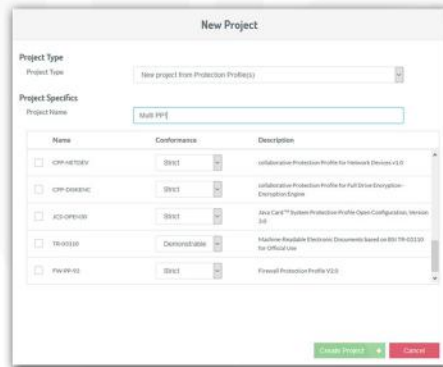
AUTOMATIC VALIDATION

Whenever possible CCGen will automatically verify the consistency of your documents, so you can forget about lab's observation reports. Don't send the documentation until is validated by CCGen!



ONLINE / OFFLINE

CCGen is available for online use through https in our secured server, but if you have special security requirements, you can also set it up in your own site through an easy-to-install docker.io image.



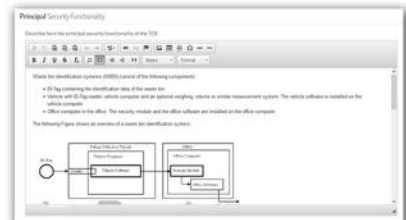
MULTI-PP CONFORMANT STRICT / DEMONSTRABLE

When you create a new project, you can state compliance with one or multiple protection profiles. We take care of complexity! CCGEN will guide you, demonstrating strict or demonstrable compliance. Every aspect of the norm is taken into account to simplify and make easy that which has always been difficult.



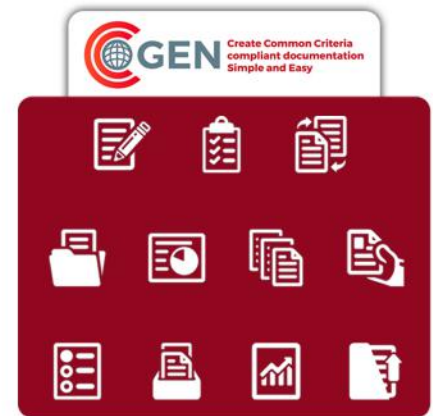
INTEGRATED ADVANCED EDITOR

Our integrated editor has many features that makes writing CC documentation easy and fast. It makes references to SFRs or objectives so if you change the name of an element it is consistently changed across all documentation! Include abbreviations from the acronyms dictionary or insert references to external or internal documents.



CONTROL ALL YOUR DOCUMENTATION

Not just the Security Target or a Protection Profile, CCGen will be able to generate all the Common Criteria documentation! Consistently maintain references across documents, generate guidance documentation from the security objectives for the operational environment, take into account the TOE labelling and delivery process, describe your TSFis and your security architecture, create test documentation following CC guidelines or automatically generate the configuration items list. Control every aspect of the norm from one app!



INTEGRATED CM SYSTEM

If the norm requires a version control system, there is one already fully integrated into CCGen so you can use it if you need to. This will enable you to track changes and easily keep the versions tidy directly from the webapp.

ALL YOUR PROJECT IN ONE FILE

You can download the project to your computer when you want, you can integrate it into your changes control system or do whatever you want. You have all your CC related documentation in just one file!



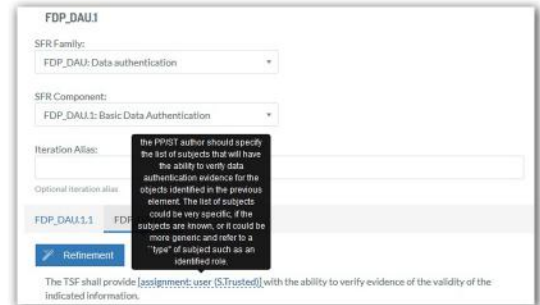


GENERATE DOCX DOCUMENTATION

When your project is ready, you can generate a docx for each document. Make some style adjustments and it will be ready to fulfil all the content and presentation requirements of the norm!

SFR EASY FILL

In this way it is impossible to go wrong when completing a SFR! Select your SFR and fill it with a point and click approach. Read the norm advice regarding each operation so everything is correct. Create refinements of the SFR that are fully compliant with the norm using the refinement wizard. Use the full part 2 catalogue, the extended SFRs coming from a Protection Profile or define your own extended SFRs.



FDP_DAU.1

SFR Family: FDP_DAU: Data authentication

SFR Component: FDP_DAU.1: Basic Data Authentication

Iteration Alias:

Optional iteration alias:

FDP_DAU.1.1 FDI

Refinement

The TSF shall provide [assignment: user, (S, T, Trusted)] with the ability to verify evidence of the validity of the indicated information.

Tooltip: The PP/PT author should specify the list of subjects that will have the ability to verify data authentication evidence for the objects identified in the previous element. The list of subjects could be very specific, if the subjects are known, or it could be more generic and refer to a "type" of subject such as an identified role.

Dependency Analysis

Missing dependencies justification

SFR	Unsatisfied dependencies	Justification for missing dependencies.
FDP_DAU.1		
FDP_SDI.1		
FRIU_FLT.1	FPF_PLI.1	FRIU_FLT.1 requires the TOE to ensure the operation of the data transfer from the vehicle software to the security module even if the data is lost within the vehicle software. This requirement is driven to fulfil the organisational security policy, which relates more to the
FAU_ADR.1	FAU_SAA.1	

AUTOMATIC DEPENDENCY ANALYSIS

CCGen automatically takes care of dependency analysis, and requests you to justify missing dependencies.

CCGEN EDITIONS

CCGen is distributed in different editions depending on user needs. Some of the functionality may or may not be available in your edition.

The free edition is the edition available to everyone on the Internet. It allows the creation of basic Security Targets without Protection Profile compliance and without expert tips.

In the free edition, the project file is never saved in the server. This way you are responsible for the project file and you should load this file whenever you access the app (like in a desktop application).

The available functionality packages are the following:

- **Collaborative Access** Allows shared access to a project. The webapp will store the project file and different users can access the project online.
- **PP Conformance** Allows creating a project conforming to one or more stored Protection Profile.
- **PP Creation** Allows the creation of new Protection Profiles to declare compliance.
- **AGD** Helps with the creation of preparatory guidance and operational guidance
- **ADV** Helps with creating development documentation (design, security architecture, functional specification...)
- **ATE** Helps to create testing documentation (tests, coverage, depth...)
- **ALC** Helps in the creation of life cycle documentation (item configuration list...)
- **CM System** Includes a basic Configuration Management System integrated and ready to use.

Please note that if a project is created using a functionality package, the project will not be loadable in other instances of the webapp where this functionality package is not available. For example, a project conforming to a PP will not be loadable in the free edition of the webapp.



CGEN

Create Common Criteria
compliant documentation
Simple and Easy